

CONSTRUCTING THE FUTURE

NEW CAPITAL

# MENORCA

R E S I D E N C E

ON THE STRENGTH OF OUR PAST

“

*Constructing* the future,  
on the strength of our past

”

ON THE STRENGTH OF OUR PAST

# Table of content

ABOUT MARDEV  
LOCATION  
THE NEW ADMINSTRATIVE CAPITAL  
R8 DISTRICT  
ABOUT MENORCA  
FACILITIES  
COMMUNITY  
LEVELING

CONSTRUCTING THE FUTURE



CONSTRUCTING THE FUTURE

ON THE STRENGTH OF OUR PAST

ON THE STRENGTH OF OUR PAST

# about MARDEV

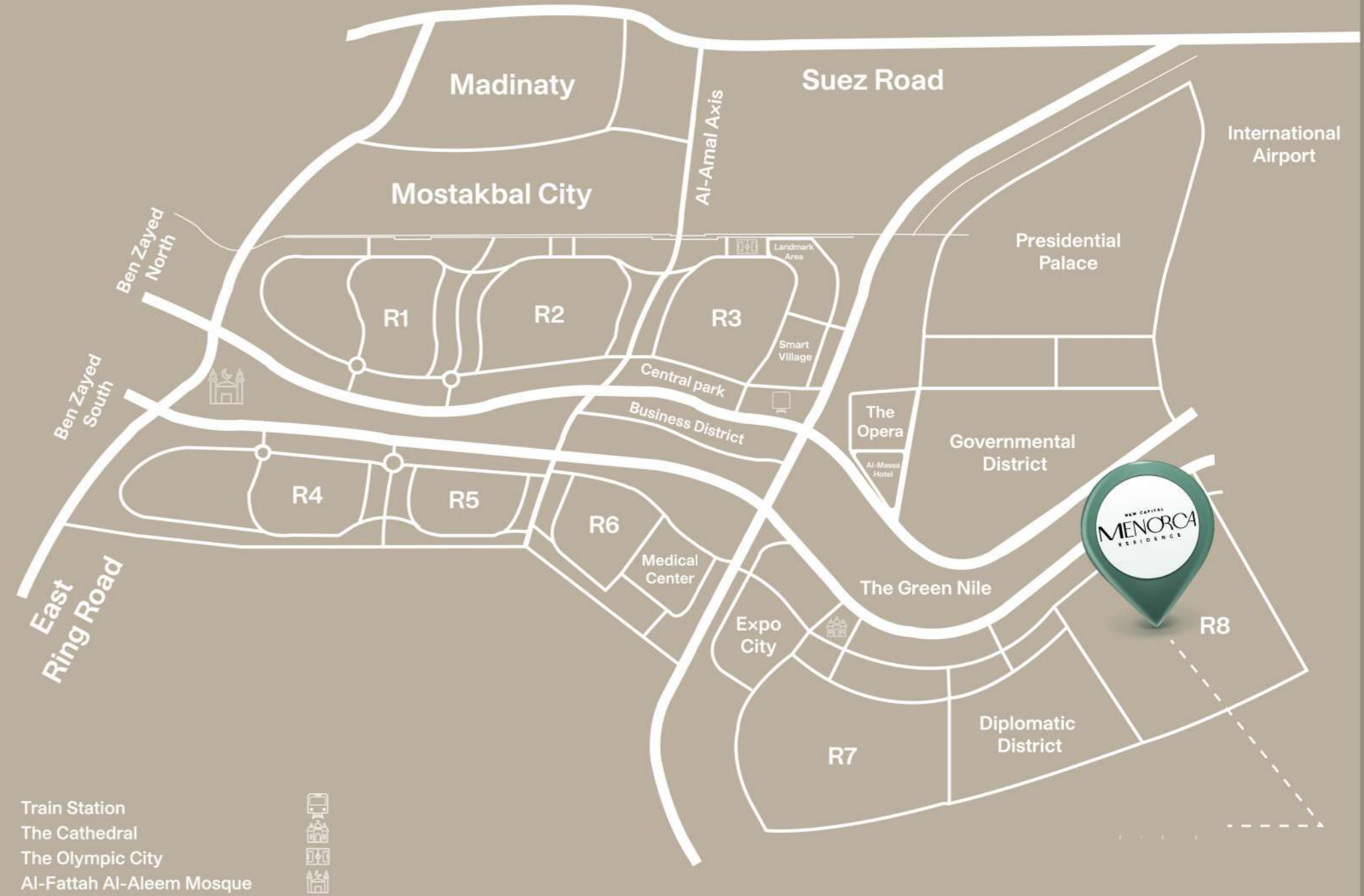
Al Marwa Development, or MARDEV, is one of the real estate development pioneers in Egypt, with more than 30 years of experience in civil construction and urban development. MARDEV was established in 1989 by a group of elite consultants and real estate development experts, who have established many projects to develop an outstanding history of high-quality civil construction. MARDEV aims to provide a new concept of luxury by offering them distinctively designed houses within a modern residential community that combines serenity and modern vibes right in the middle of the New Capital.

CONSTRUCTING THE FUTURE





# New capital Location



ON THE STRENGTH OF OUR PAST

# New Administrative Capital

The New Administrative Capital is one of the largest urban cities in the world. It's one of the fourth-generation cities that occupies about 170,000 acres (approximately 714 km), equivalent to the area of Singapore and about one and a half times the Greater Cairo.

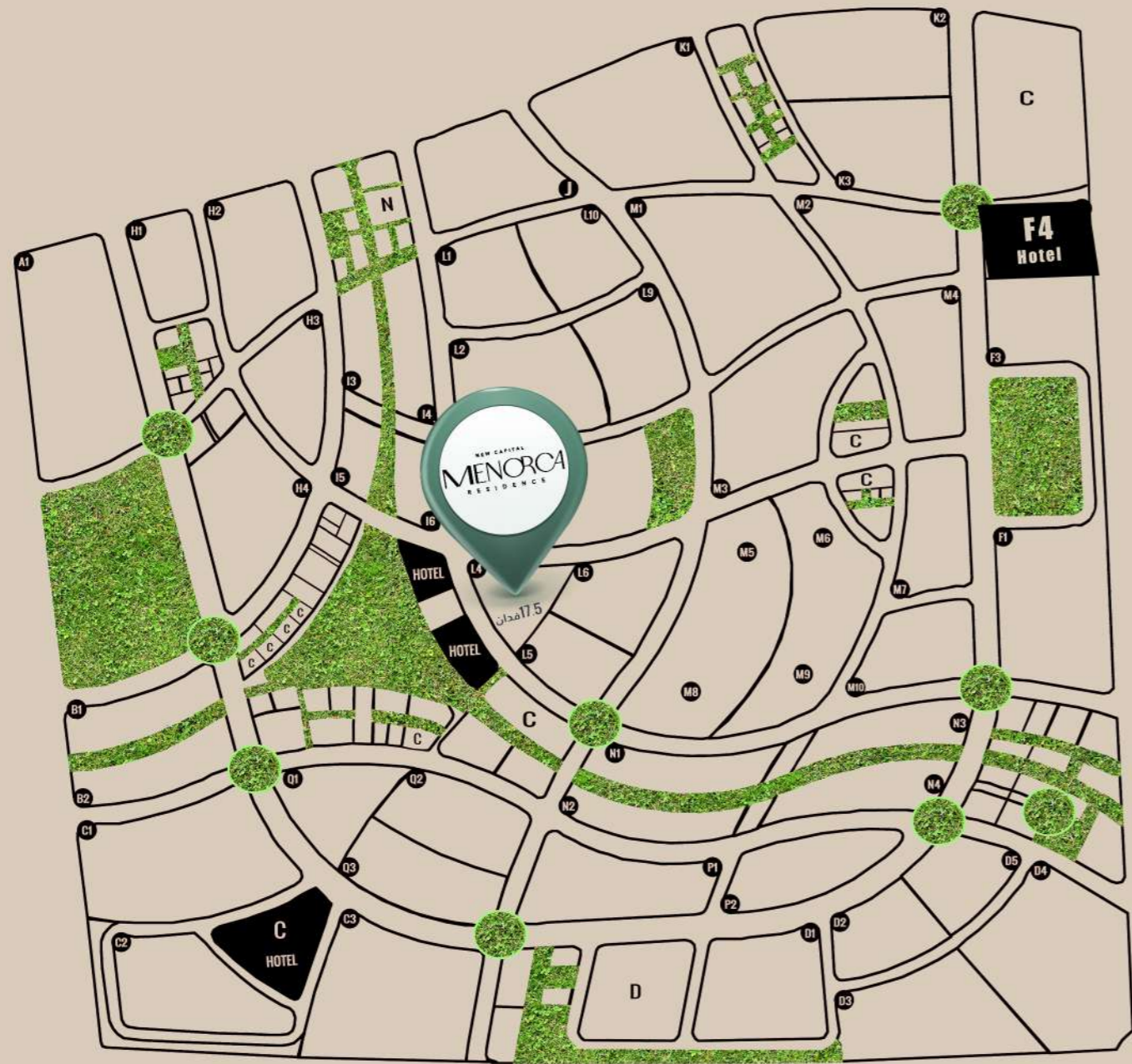
The first phase of the New Capital project was implemented on an area of 40,000 acres, as it contains the government district that occupies around 550 acres and includes the financial and business district, and the New Capital Towers project, which includes 20 residential, administrative, commercial and service towers. This area also includes the highest tower in Africa, with a height of 385 meters and a new international airport that will be established on an area of 16 km.

And one of the new capital's greatest milestones is the Green River, with a length of 35 km, linked to all the city's neighborhoods and universities, to simulate the Nile River in Cairo. The Green River is the biggest green axis in the world.

CONSTRUCTING THE FUTURE



# R8 Map



ON THE STRENGTH OF OUR PAST

# R8 Residential District

ON THE STRENGTH OF OUR PAST

The Ministry of Housing and Urban Communities has decided to assign district R8 in the New Administrative Capital for residential projects within the first phase of the New Administrative Capital. District R8 is around 2500 acres wide.

# R8 Residential District

Given that, R8 is quieter and more luxurious than other residential neighborhoods in the New Administrative Capital, as it's located next to the Embassies Neighborhood, near the Green River, the Capital Airport, the Presidential Residence, the Opera House, the Center of Culture and Arts, and Al-Masa Hotel.



CONSTRUCTING THE FUTURE

# R8 Residential District

It contains two sports clubs, one of them is 73 acres big, and the other on an area of 35.5 acres, central park on an area of about 40 acres and 15 acres, in addition to many green spaces between residential buildings. The district has some top-notch hotels with a moderate population density.



CONSTRUCTING THE FUTURE

ON THE STRENGTH OF OUR PAST



NEW CAPITAL  
**MENORCA**  
RESIDENCE

CONSTRUCTING THE FUTURE

ON THE STRENGTH OF OUR PAST



about  
**MENORCA**  
RESIDENCE

Menorca Compound is designed to be one of the top-notch residential compounds not only in the New Administrative Capital on 17.64 acres but also in Egypt with its astonishing designs in the modern architectural style, and the various spaces with splendid views that uplevel it to match luxury lovers search for a perfect location and sight.

CONSTRUCTING THE FUTURE

ON THE STRENGTH OF OUR PAST

# about MENORCA

R E S I D E N C E

It is carefully divided to provide a distinctive experience of serenity, privacy, and peace of mind. The residential buildings have only a construction ratio estimated at 19.5% of the total area of the compound.

CONSTRUCTING THE FUTURE

ON THE STRENGTH OF OUR PAST

# about MENORCA

R E S I D E N C E

The rest of the compound (80.5%) is for the pleasing landscapes and luxurious services like the artificial lakes, swimming pools, green spaces, a commercial mall, and various services.

CONSTRUCTING THE FUTURE



# Compound Layout



CONSTRUCTING THE FUTURE

ON THE STRENGTH OF OUR PAST

ON THE STRENGTH OF OUR PAST

CONSTRUCTING THE FUTURE



CONSTRUCTING THE FUTURE

ON THE STRENGTH OF OUR PAST

ON THE STRENGTH OF OUR PAST

CONSTRUCTING THE FUTURE



CONSTRUCTING THE FUTURE

ON THE STRENGTH OF OUR PAST

ON THE STRENGTH OF OUR PAST

CONSTRUCTING THE FUTURE



CONSTRUCTING THE FUTURE

ON THE STRENGTH OF OUR PAST

ON THE STRENGTH OF OUR PAST

CONSTRUCTING THE FUTURE



CONSTRUCTING THE FUTURE

ON THE STRENGTH OF OUR PAST

ON THE STRENGTH OF OUR PAST

CONSTRUCTING THE FUTURE



CONSTRUCTING THE FUTURE

ON THE STRENGTH OF OUR PAST

ON THE STRENGTH OF OUR PAST

CONSTRUCTING THE FUTURE



CONSTRUCTING THE FUTURE

ON THE STRENGTH OF OUR PAST

ON THE STRENGTH OF OUR PAST

# Compound Facilities



CONSTRUCTING THE FUTURE

ON THE STRENGTH OF OUR PAST

# Compound Facilities



SECURITY



PARKING AREA



SPORTS FIELDS



HYPER MARKETS



PHARMACIES



MEDICAL CENTRES



NURSERIES



RESTAURANTS



BANKS



SWIMMING POOLS



CLUB HOUSE



SOLAR ENERGY



GYM



CINEMAS



KIDS AREA

CONSTRUCTING THE FUTURE

ON THE STRENGTH OF OUR PAST



# Compound Community

Menorca Compound provides many services and activities to fulfill your desires and meet your expectations of comfortable accommodation and a luxurious lifestyle within a compound that offers various payment systems to find what suits you the most.

CONSTRUCTING THE FUTURE



# Compound Community

Each building holds two elevators and a garage, and all residential units are equipped with advanced central systems and solar energy systems.

The compound offers the highest means of security and protection through 24-hour security patrols and surveillance cameras throughout the compound.

ON THE STRENGTH OF OUR PAST

CONSTRUCTING THE FUTURE



# Leveling

Menorca project consists of 17 residential buildings with 738 housing units built in three different models (A, B, and C), some overlooking the artificial lakes and others in private gardens.



# M<sup>Spaces</sup> Model

## A model spaces:

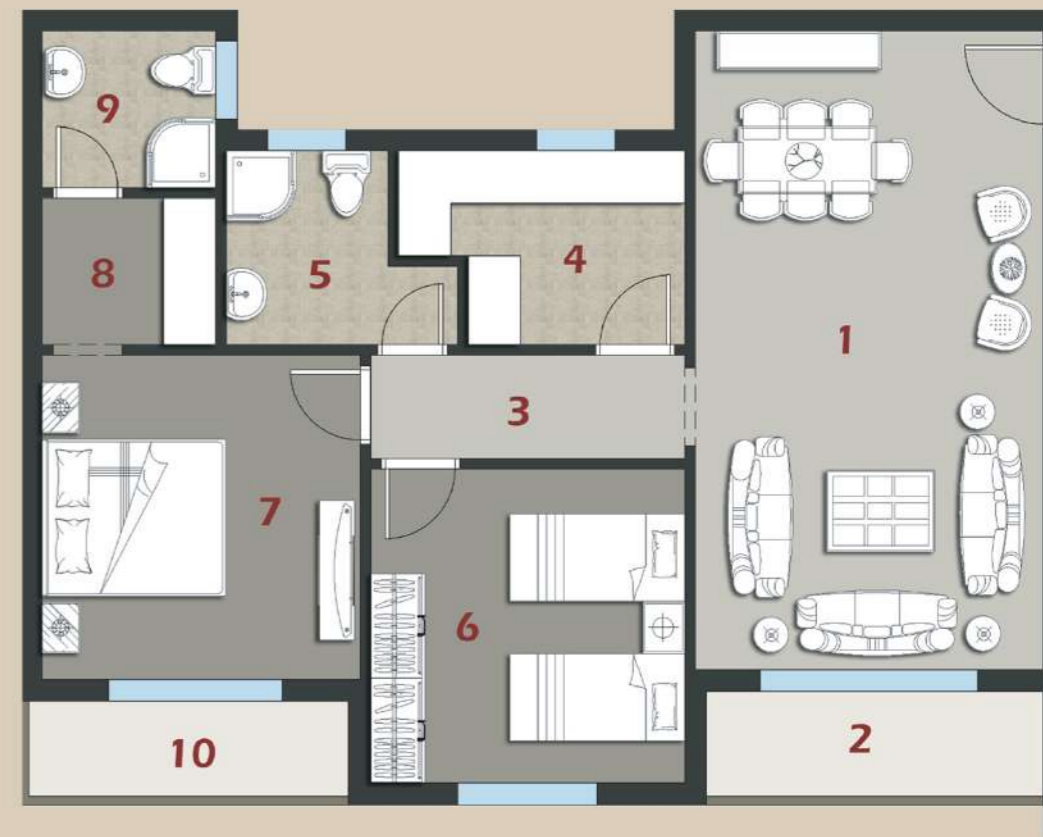
The residential apartments' spaces range from 115 m<sup>2</sup>, 125 m<sup>2</sup>, 129 m<sup>2</sup>, 130 m<sup>2</sup>, 144m<sup>2</sup>, 160 m<sup>2</sup>, 169m<sup>2</sup>, 255m<sup>2</sup> and 258m<sup>2</sup>.

Total Area  
115M<sup>2</sup>



<b>1- Reception</b>	6.50 x 4.05	<b>2- Terrace</b>	1.80 x 1.40
<b>3- Corridor</b>	3.65 x 1.24	<b>4- Bathroom</b>	2.66 x 2.75
<b>5- Kitchen</b>	3.22 x 2.72	<b>6- Bedroom1</b>	3.90 x 3.90
<b>7- Bedroom2</b>	4.75 x 3.97	<b>8- Bathroom</b>	2.52 x 2.03
<b>9- Terrace</b>	3.30 x 1.42		

Total Area  
125M<sup>2</sup>



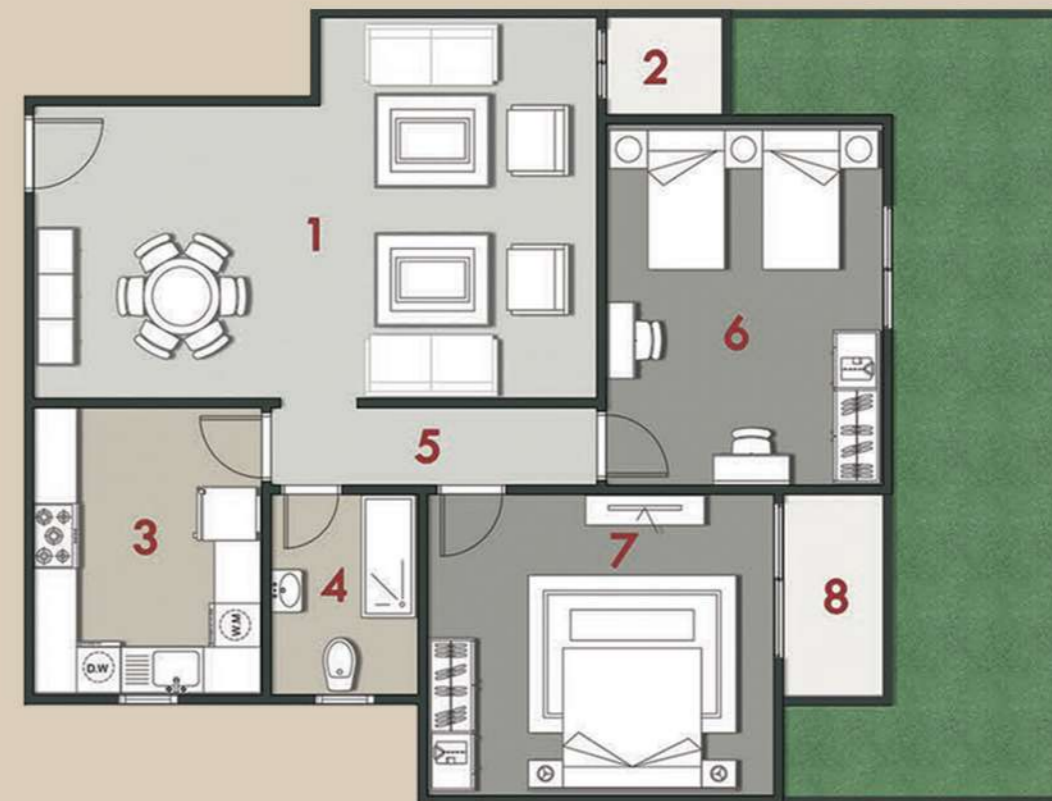
<b>1- Reception</b>	7.70 x 4.13	<b>6- Bedroom 1</b>	3.73 x 3.85
<b>2- Terrace</b>	3.90 x 1.30	<b>7- Bedroom 2</b>	4.02 x 4.08
<b>3- Corridor</b>	3.73 x 1.30	<b>8- Dressing</b>	2.25 x 1.80
<b>4- Kitchen</b>	2.50 x 3.53	<b>9- Bathroom</b>	2.33 x 1.90
<b>5- Bathroom</b>	2.34 x 2.78	<b>10- Terrace</b>	1.20 x 3.80

Total Area  
129M<sup>2</sup>



<b>1- Lobby</b>	2.96 x 2.39	<b>6- Bathroom</b>	2.34 x 2.78
<b>2- Reception</b>	7.70 x 4.13	<b>7- Bedroom 1</b>	3.73 x 3.85
<b>3- Terrace</b>	3.90 x 1.30	<b>8- Bedroom 2</b>	4.02 x 4.08
<b>4- Corridor</b>	3.73 x 1.30	<b>9- Dressing</b>	2.25 x 1.80
<b>5- Kitchen</b>	2.50 x 3.53	<b>10- Bathroom</b>	2.33 x 1.90
		<b>11- Terrace</b>	1.20 x 3.80

Total Area  
130M<sup>2</sup>



<b>1- Reception</b>	3.98 X 7.50	<b>5- Corridor</b>	1.12 X 4.23
<b>Reception</b>	1.27 X 3.78	<b>6- Bedroom1</b>	3.78 x 4.80
<b>2- Terrace</b>	1.45 X 1.68	<b>7- Bedroom2</b>	4.09 X 4.63
<b>3- Kitchen</b>	3.15 X 3.90	<b>8- Terrace</b>	1.48 X 2.80
<b>4- Bathroom</b>	2.03 X 2.78		

Total Area  
144M<sup>2</sup>



<b>1- Corridor</b>	1.32 X 5.12	<b>7- Bedroom 1</b>	3.78 X 3.84
<b>2- Reception</b>	4.63 X 5.41	<b>8- Bedroom 2</b>	3.72 X 3.78
<b>3- Terrace</b>	1.48 X 3.77	<b>9- Terrace</b>	1.45 X 1.68
<b>4- Kitchen</b>	2.78 X 3.16	<b>10- M. Bedroom</b>	3.78 X 3.72
<b>5- Bathroom</b>	2.02 X 2.78	<b>M. Bedroom</b>	1.21 X 1.68
<b>6- Corridor</b>	1.15 X 3.72	<b>11- Bathroom</b>	2.10 X 2.77
		<b>12- Terrace</b>	1.51 X 2.18

Total Area  
160M<sup>2</sup>



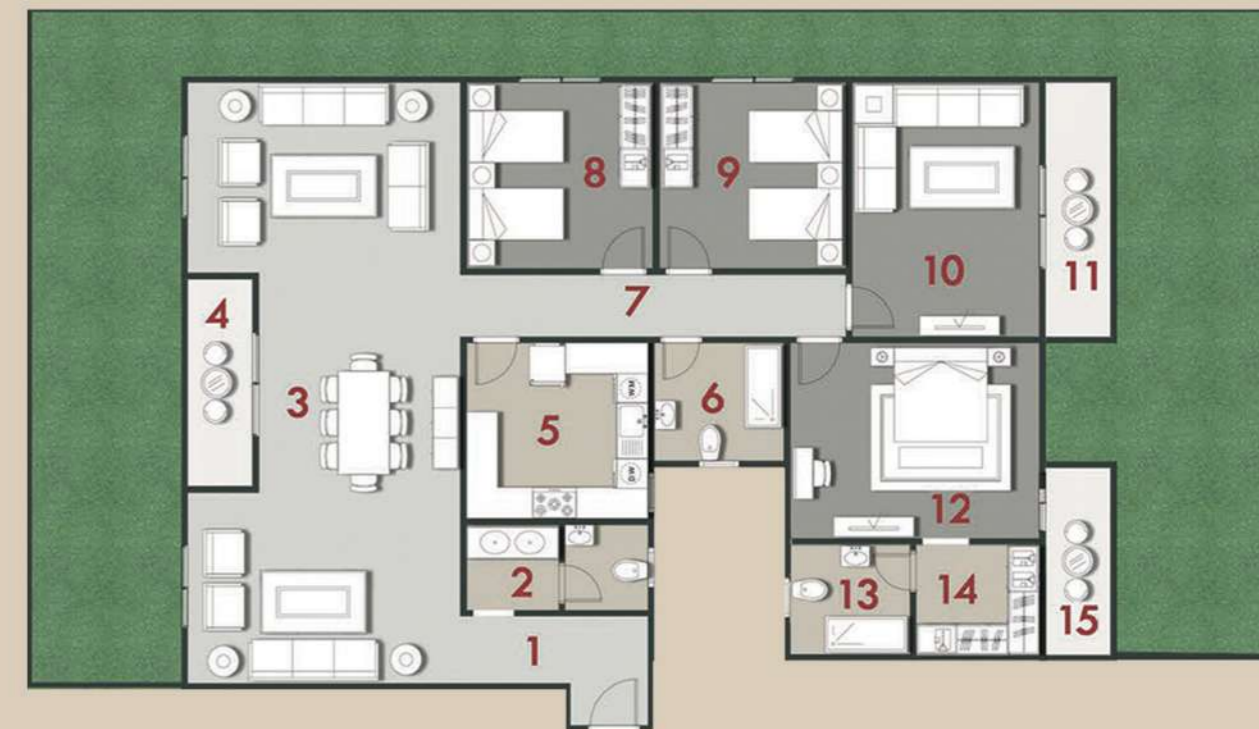
<b>1- Reception</b>	6.79 x 6.30	<b>6- Bedroom 1</b>	3.85 x 3.90
<b>2- Terrace</b>	2.40 x 1.30	<b>7- Bedroom 2</b>	3.97 x 4.21
<b>3- Corridor</b>	5.85 x 1.15	<b>8- Bedroom 3</b>	3.74 x 4.88
<b>4- Bathroom</b>	3.00 x 2.79	<b>9- Bathroom</b>	2.40 x 2.14
<b>5- Kitchen</b>	3.12 x 2.72	<b>10- Terrace</b>	2.50 x 1.88

Total Area  
169M<sup>2</sup>



<b>1- Lobby</b>	1.32 X 3.29	<b>6- Corridor</b>	1.32 X 5.60
<b>2- Reception</b>	6.60 X 6.75	<b>7- Bedroom1</b>	3.80 X 3.90
<b>3- Terrace</b>	1.43 X 2.69	<b>8- Bedroom2</b>	3.78 X 4.27
<b>4- Kitchen</b>	3.18 X 3.50	<b>9- M.Bedroom</b>	3.84 X 4.79
<b>5- Bathroom</b>	1.76 X 2.67	<b>10- Bathroom</b>	2.13 X 2.64
<b>Bathroom</b>	0.88 X 1.24	<b>11- Terrace</b>	1.90 X 2.54

Total Area  
255M<sup>2</sup>



<b>1- Lobby</b>	1.74 X 2.29	<b>7- Corridor</b>	1.32 X 7.45
<b>Lobby</b>	1.48 X 1.94	<b>8- Bedroom1</b>	3.72 X 3.78
<b>2- Guest Toilet</b>	1.77 X 3.68	<b>9- Bedroom2</b>	3.73 X 3.78
<b>3- Reception</b>	3.87 X 5.45	<b>10- living room</b>	3.73 X 5.10
<b>Reception</b>	4.02 X 4.13	<b>11- Terrace</b>	1.43 X 5.16
<b>Reception</b>	3.87 X 5.45	<b>12- m.bedroom</b>	3.92 X 5.00
<b>4- Terrace</b>	1.43 X 4.13	<b>13- Bathroom</b>	2.30 X 2.51
<b>5- Kitchen</b>	3.52 X 3.62	<b>14- Dressing</b>	2.30 X 2.55
<b>6- Bathroom</b>	2.46 X 2.62	<b>15- Terrace</b>	1.37 X 3.86

Total  
Area  
258M<sup>2</sup>



<b>1- Lobby</b>	1.74 X 2.29	<b>7- corridor</b>	1.32 X 7.45
<b>Lobby</b>	1.48 X 1.94	<b>8- Bedroom</b>	3.72 X 3.78
<b>2- Guest Toilet</b>	1.77 X 3.68	<b>9- Bedroom2</b>	3.73 X 3.78
<b>3- Reception</b>	3.87 X 5.45	<b>10-living room</b>	3.73 X 5.10
<b>Reception</b>	4.02 X 4.13	<b>11-Terrace</b>	1.43 X 5.16
<b>Reception</b>	3.87 X 5.45	<b>12-M.Bedroom</b>	4.72 X 5.00
<b>4- Terrace</b>	1.43 X 4.13	<b>13-Bathroom</b>	2.30 X 2.51
<b>5- Kitchen</b>	3.52 X 3.62	<b>14-Dressing</b>	2.30 X 2.55
<b>6- Bathroom</b>	2.46 X 2.62	<b>15-Terrace</b>	1.37 X 3.86



# M Spaces Model

## A model spaces:

There are also duplex units with areas ranging from 230 m<sup>2</sup> up to 254 m<sup>2</sup>.

ON THE STRENGTH OF OUR PAST

Total Area  
230M<sup>2</sup>  
Duplex



GROUND FLOOR

<b>1- Reception</b>	10.15 x 5.05	<b>5- Bedroom</b>	3.85 x 4.75
<b>2- Terrace</b>	2.05 x 1.50	<b>6- Bathroom</b>	2.64 x 2.18
<b>3- Bathroom</b>	2.66 x 2.27	<b>7- Terrace</b>	3.40 x 1.45
<b>4- Kitchen</b>	3.00 x 2.72		

CONSTRUCTING THE FUTURE

Total Area  
230M<sup>2</sup>  
Duplex

ON THE STRENGTH OF OUR PAST

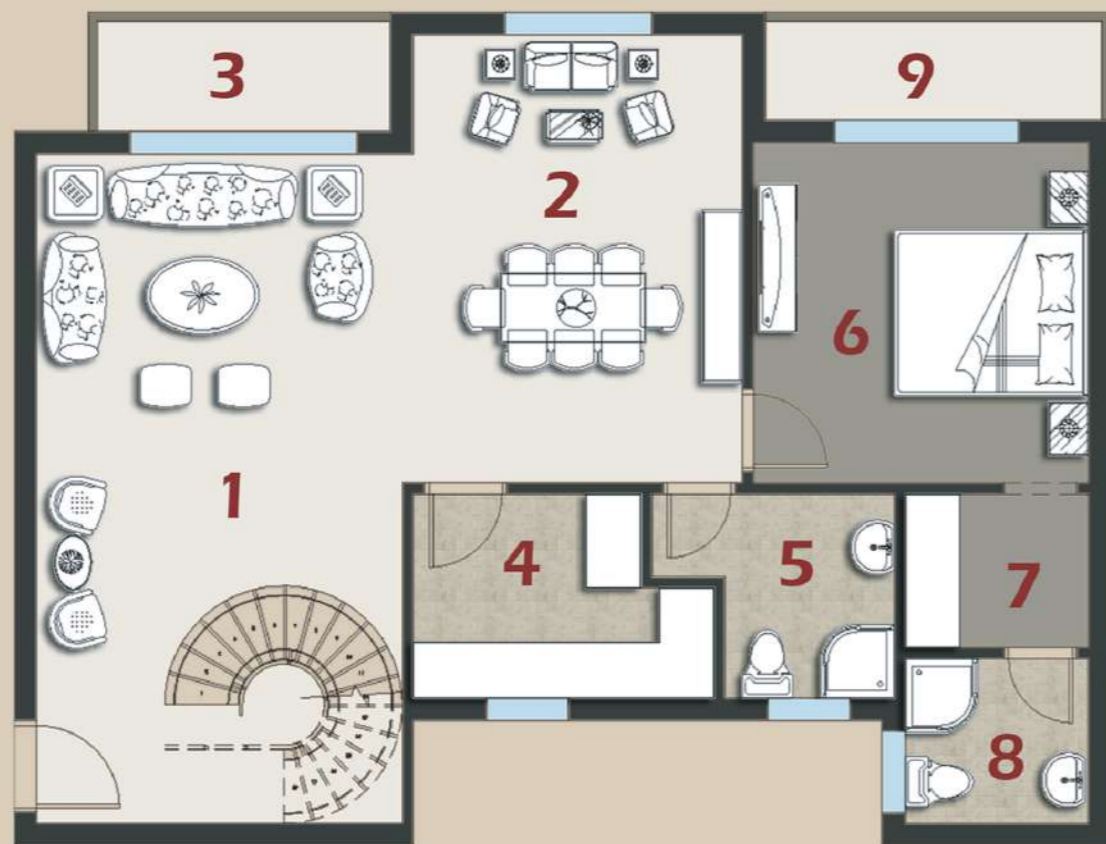


FIRST FLOOR

<b>1- Living Area</b>	4.03 x 2.87	<b>6- Terrace</b>	1.90 x 1.40
<b>2- Bathroom</b>	2.66 x 2.88	<b>7- Bedroom 2</b>	4.03 x 4.02
<b>3- Kitchenette</b>	2.72 x 1.60	<b>8- Bedroom 3</b>	4.65 x 4.50
<b>4- Corridor</b>	5.00 x 1.11	<b>9- Bathroom</b>	2.40 x 2.03
<b>5- Bedroom 1</b>	4.17 x 3.87	<b>10- Terrace</b>	3.41 x 1.42

CONSTRUCTING THE FUTURE

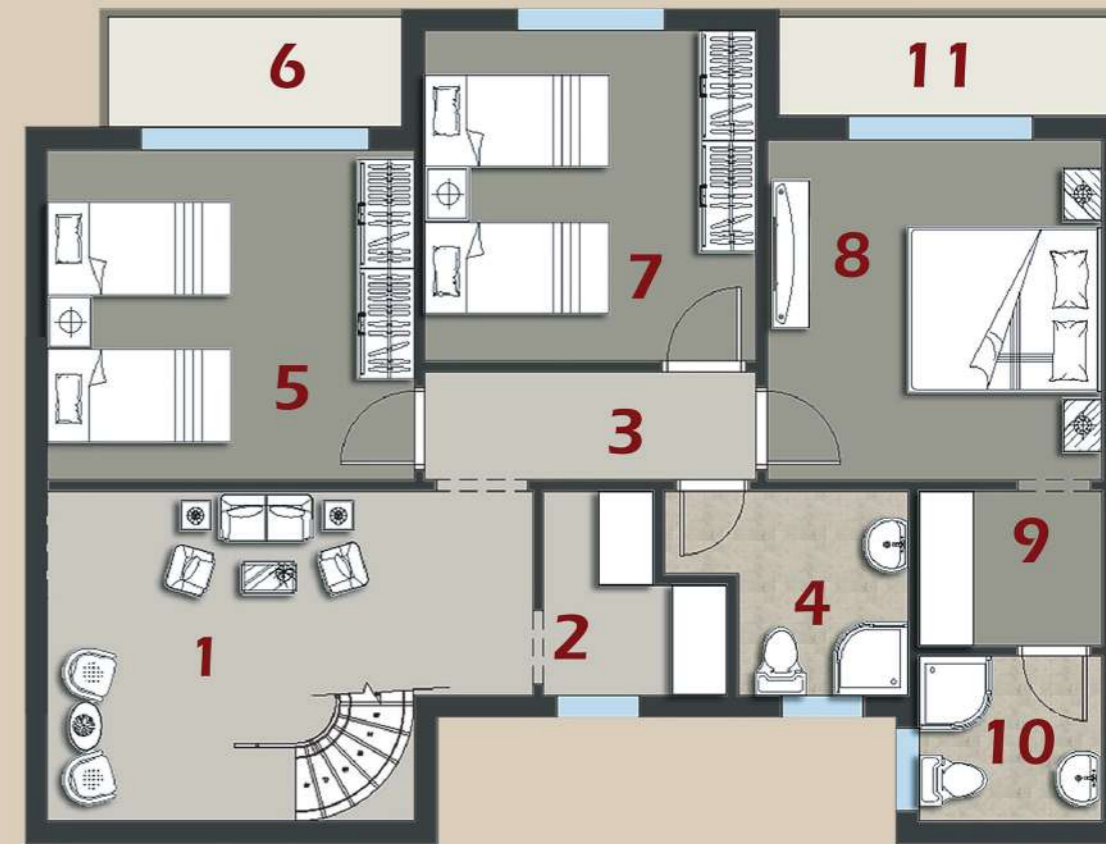
Total  
Area  
**250M<sup>2</sup>**  
Duplex



**GROUND FLOOR**

<b>1- Reception</b>	7.70 x 4.25	<b>6- Bedroom</b>	3.97 x 4.02
<b>2- Reception</b>	3.73 x 5.15	<b>7- Dressing</b>	2.37 x 1.86
<b>3- Terrace</b>	3.57 x 1.30	<b>8- Bathroom</b>	2.37 x 1.98
<b>4- Kitchen</b>	2.60 x 3.41	<b>9- Terrace</b>	4.02x1.20
<b>5- Bathroom</b>	2.60 x 2.78		

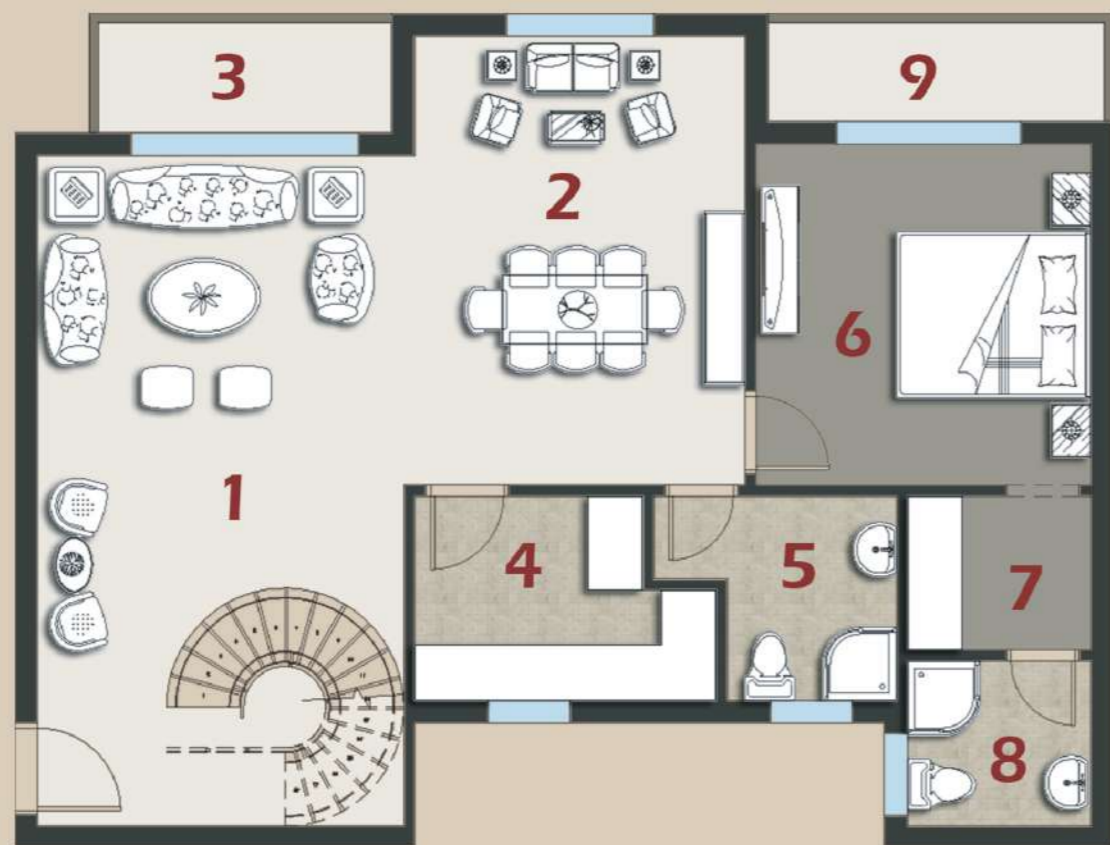
Total  
Area  
**250M<sup>2</sup>**  
Duplex



**FIRST FLOOR**

<b>1- Living Area</b>	5.54 x 3.74	<b>6- Terrace</b>	3.57 x 1.30
<b>2- Kitchenette</b>	2.34 x 2.12	<b>7- Bedroom 2</b>	3.97 x 3.85
<b>3- Corridor-</b>	3.60 x 1.20	<b>8- Bedroom 3</b>	3.90 x 3.97
<b>4- Bathroom</b>	2.48 x 2.78	<b>9- Dressing</b>	2.37 x 1.80
<b>5- Bedroom 1</b>	4.25 x 4.00	<b>10- Bathroom</b>	2.05 x 2.08
		<b>11- Terrace</b>	3.93 x 1.20

Total Area  
**254M<sup>2</sup>**  
 Duplex



**GROUND FLOOR**

<b>1- Reception</b>	7.70 x 4.25	<b>5- Bathroom</b>	2.60 x 2.78
<b>2- Reception</b>	3.73 x 5.15	<b>6- Bedroom</b>	3.97 x 4.02
<b>3- Terrace</b>	3.57 x 1.30	<b>7- Dressing</b>	2.37 x 1.86
<b>4- Kitchen</b>	2.60 x 3.41	<b>8- Bathroom</b>	2.37 x 1.98
		<b>9- Terrace</b>	4.02x1.20

Total Area  
**254M<sup>2</sup>**  
 Duplex



**FIRST FLOOR**

<b>1- Lobby</b>	2.96 x 2.39	<b>7- Terrace</b>	3.57 x 1.30
<b>2- Living Area</b>	5.54 x 3.74	<b>8- Bedroom 2</b>	3.97 x 3.85
<b>3- Kitchenette</b>	2.34 x 2.12	<b>9- Bedroom 3</b>	3.90 x 3.97
<b>4- Corridor</b>	3.60 x 1.20	<b>10- Dressing</b>	2.37 x 1.80
<b>5- Bathroom</b>	2.48 x 2.78	<b>11- Bathroom</b>	2.05 x 2.08
<b>6- Bedroom 1</b>	4.25 x 4.00	<b>12- Terrace</b>	3.93 x 1.20

# M Spaces Model

## B model spaces:

The apartments' spaces range from 185 m<sup>2</sup> to 193 m<sup>2</sup>.



Total Area  
185M<sup>2</sup>



<b>1- Reception</b>	8.16 x 5.15	<b>8- Bedroom 1</b>	4.22 x 3.79
<b>2- Terrace</b>	5.00 x 1.30	<b>9- Bedroom 2</b>	4.47 x 4.26
<b>3- Wash Area</b>	1.97 x 1.30	<b>10- Terrace</b>	4.30 x 1.30
<b>4- Guest Toilet</b>	2.00 x 1.52	<b>11- Bedroom 3</b>	4.22 x 4.10
<b>5- Corridor</b>	5.25 x 1.10	<b>12- Dressing 2</b>	2.02 x 2.02
<b>6- Kitchen</b>	3.81 x 3.13	<b>13- Bathroom</b>	2.09 x 2.02
<b>7- Bathroom</b>	3.83 x 2.12	<b>14- Terrace</b>	1.85 x 1.30

Total  
Area  
193M<sup>2</sup>



<b>1- Lobby</b>	3.52 x 2.67	<b>9- Bedroom 1</b>	4.22 x 3.79
<b>2- Reception</b>	8.16 x 5.15	<b>10- Bedroom 2</b>	4.47 x 4.26
<b>3- Wash area</b>	1.97 x 1.30	<b>11- Terrace</b>	4.30 x 1.30
<b>4- Guest toilet</b>	2.00 x 1.52	<b>12- Bedroom 3</b>	4.22 x 4.10
<b>5- Terrace</b>	5.00 x 1.30	<b>13- Dressing</b>	2.02 x 2.02
<b>6- Corridor</b>	5.25 x 1.10	<b>14- Bathroom</b>	2.09 x 2.02
<b>7- Kitchen</b>	3.81 x 3.13	<b>15- Terrace</b>	1.85 x 1.30
<b>8- Bathroom</b>	3.83 x 2.12		

CONSTRUCTING THE FUTURE



# M Spaces Model

## C model spaces:

The areas of residential apartments in this model range from 110m<sup>2</sup>, 160m<sup>2</sup>, 162m<sup>2</sup>, 163 m<sup>2</sup>, 168 m<sup>2</sup>, 170m<sup>2</sup>, 175m<sup>2</sup>, 200m<sup>2</sup>, 210m<sup>2</sup>, 266 m<sup>2</sup>, 272 m<sup>2</sup> and 280m<sup>2</sup>

CONSTRUCTING THE FUTURE

Total  
Area  
110M<sup>2</sup>



<b>1- Reception</b>	4.22 X 4.85	<b>5- Bathroom</b>	1.82 X 2.34
<b>Reception</b>	1.37 X 4.24	<b>6- Corridor</b>	1.12 X 4.82
<b>2- Terrace</b>	1.32 X 3.63	<b>7- Bedroom I</b>	3.72 X 3.78
<b>3- Lobby</b>	1.62 X 1.81	<b>8- Bedroom 2</b>	3.78 X 4.26
<b>4- Kitchen</b>	2.66 X 4.02		

Total  
Area  
160M<sup>2</sup>



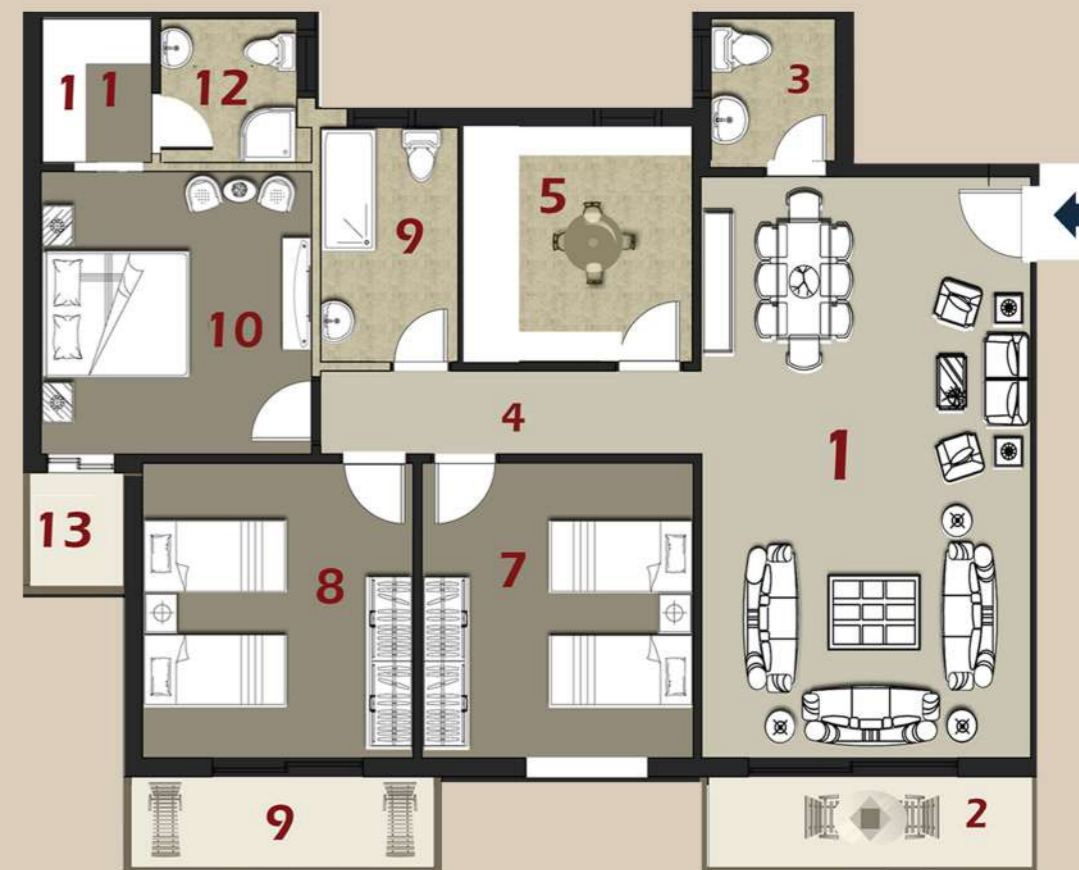
<b>1- Reception</b>	7.20 X 4.98	<b>7- Bedroom 1</b>	3.85 X 3.85
<b>2- Terrace</b>	4.85 X 1.30	<b>8- Bedroom 2</b>	4.00 X 3.84
<b>3- Guest Toilet</b>	2.28 X 2.22	<b>9- Terrace</b>	4.23 X 1.30
<b>4- Corridor</b>	5.07 X 1.16	<b>10- M. Bedroom</b>	3.97 X 3.86
<b>5- Kitchen</b>	3.25 X 2.95	<b>11- Dressing</b>	2.23 X 1.89
<b>6- Bathroom</b>	2.95 X 2.02	<b>12- Bathroom</b>	2.23 X 2.14
		<b>13- Terrace</b>	1.60 X 1.47

Total Area  
162M<sup>2</sup>



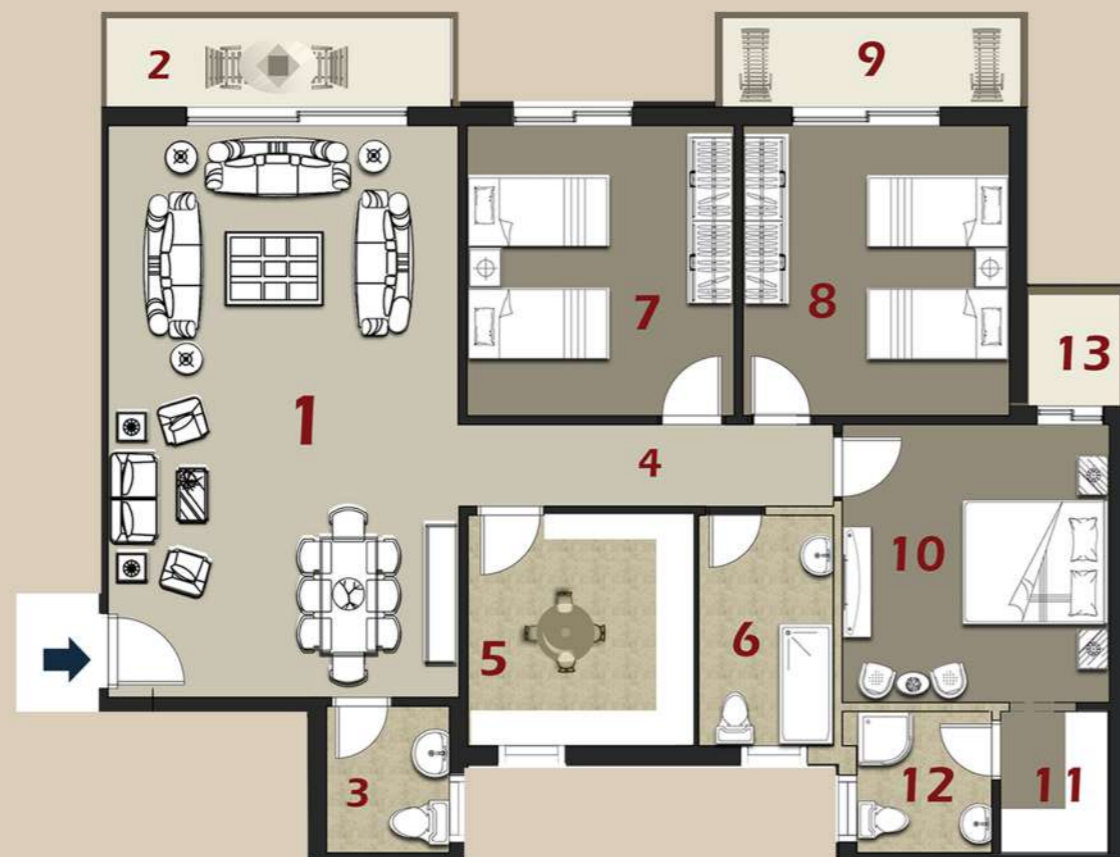
<b>1- Reception</b>	4.26 X 6.97	<b>7- Bedroom1</b>	3.78 X 4.01
<b>/Reception</b>	1.54 X 2.73	<b>8- Bedroom2</b>	3.78 X 4.01
<b>2- Terrace</b>	1.32 X 4.32	<b>9- Terrace</b>	1.32 X 3.84
<b>3- Guest Bathroom</b>	1.48 X 2.27	<b>10- M.Bedroom</b>	3.73 X 3.82
<b>4- Kitchen</b>	2.38 X 3.28	<b>11- Dressing</b>	1.90 X 2.07
<b>/Kitchen</b>	0.74 X 1.80	<b>12- Bathroom</b>	1.98 X 2.07
<b>5- Bathroom</b>	2.02 X 3.28	<b>13- Terrace</b>	1.40 X 1.65
<b>6- Corridor</b>	1.22 X 5.14		

Total Area  
163M<sup>2</sup>



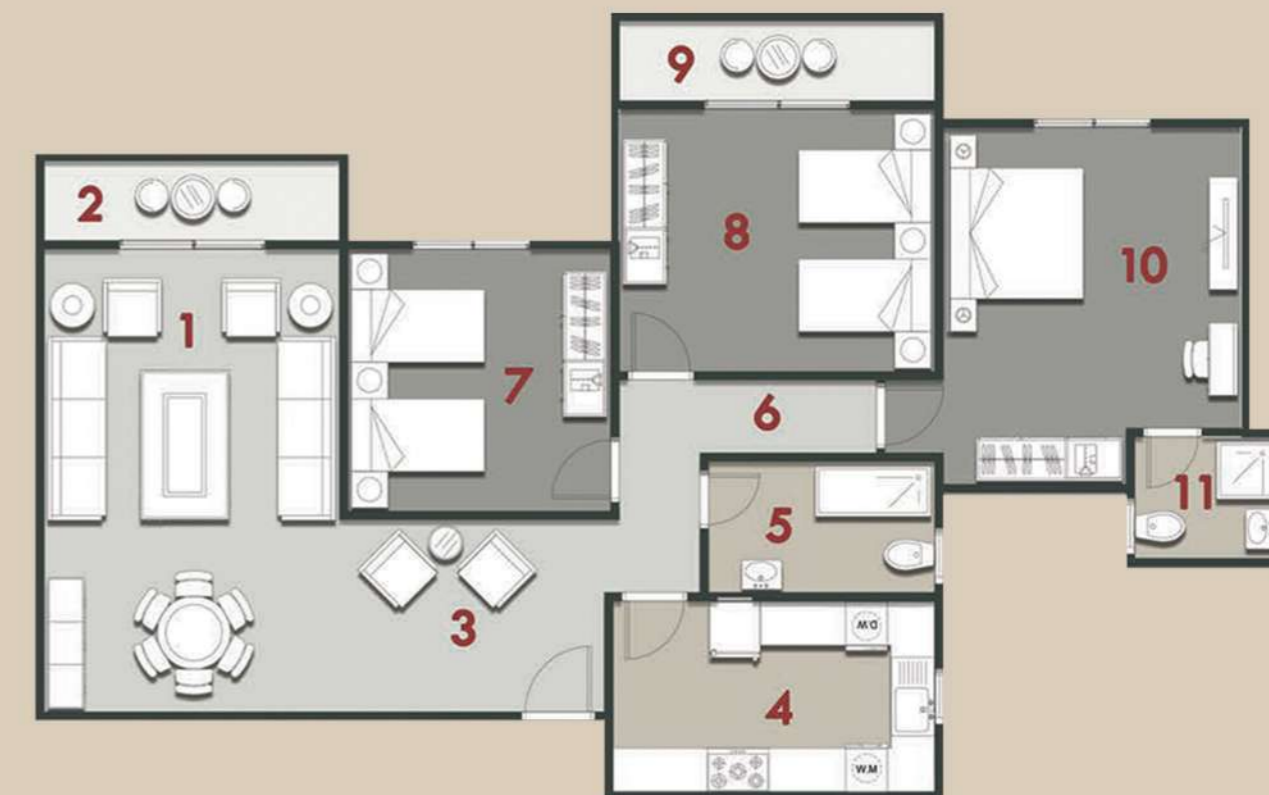
<b>1- Reception</b>	7.94 x 4.14	<b>7- Bedroom 1</b>	4.27 x 3.84
<b>2- Terrace</b>	4.14 x 1.30	<b>8- Bedroom 2</b>	4.27 x 3.85
<b>3- Guest Toilet</b>	2.09 x 1.91	<b>9- Terrace</b>	4.23 x 1.30
<b>4- Corridor</b>	5.05 x 1.10	<b>10- M.Bathroom</b>	3.97 x 3.85
<b>5- Kitchen</b>	3.47 x 3.15	<b>11- Dressing</b>	1.94 x 1.71
<b>6- Bathroom</b>	3.47 x 1.90	<b>12- Bathroom</b>	2.19 x 1.94
		<b>13- Terrace</b>	1.85 x 1.35

Total Area  
168M<sup>2</sup>



<b>1- Reception</b>	8.19 x 4.85	<b>7- Bedroom 1</b>	4.27 x 3.72
<b>2- Terrace</b>	4.85 x 1.30	<b>8- Bedroom 2</b>	4.27 x 3.97
<b>3- Guest Toilet</b>	2.16 x 1.91	<b>9- Terrace</b>	4.23 x 1.30
<b>4- Corridor</b>	5.17 x 1.10	<b>10- M.Bedroom</b>	3.97 x 3.74
<b>5- Kitchen</b>	3.47 x 3.15	<b>11- Dressing</b>	2.11 x 1.71
<b>6- Bathroom</b>	3.47 x 1.90	<b>12- Bathroom</b>	2.19 x 2.11
		<b>13- Terrace</b>	1.60 x 1.35

Total Area  
170M<sup>2</sup>



<b>1- Reception</b>	4.23 X 6.60	<b>7- Bedroom1</b>	3.72 X 3.78
<b>2- Terrace</b>	1.22 X 4.29	<b>8- Bedroom2</b>	3.78 X 4.45
<b>3- Lobby</b>	2.82 X 3.69	<b>9- Terrace</b>	1.22 X 4.57
<b>4- Kitchen</b>	2.79 X 4.60	<b>10- M.Bedroom</b>	4.26 X 4.31
<b>5- Bathroom</b>	1.92 X 3.29	<b>M.Bedroom</b>	0.77 X 2.62
<b>6- Corridor</b>	1.22 X 3.04	<b>11- Bathroom</b>	1.85 X 2.21
<b>Corridor</b>	1.12 X 4.51		

Total Area  
175M<sup>2</sup>



<b>1- Reception</b>	4.20 X 7.50	<b>7-Bedroom1</b>	3.72 X 4.26
<b>Reception</b>	0.88 X 1.40	<b>8- Bedroom2</b>	3.78 X 4.26
<b>2- Terrace</b>	1.22 X 4.26	<b>9- Terrace</b>	1.22 X 3.84
<b>3- Kitchen</b>	3.18 X 4.50	<b>10- M.Bedroom</b>	3.82 X 4.62
<b>4- Bathroom</b>	2.10 X 2.68	<b>11- Bathroom</b>	1.98 X 2.58
<b>5- Lobby</b>	1.82 X 2.10	<b>12- Dressing</b>	1.90 X 2.58
<b>6- Corridor</b>	1.32 X 5.08	<b>13- Terrace</b>	1.40 X 1.76

Total Area  
200M<sup>2</sup>



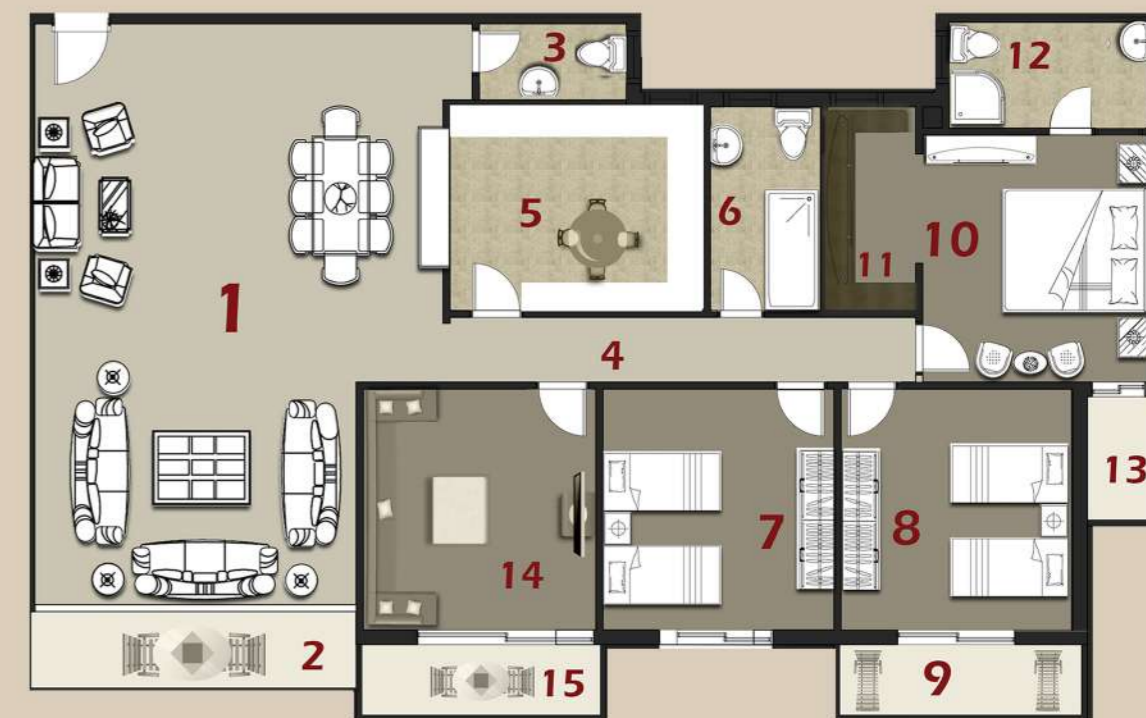
<b>1- Reception</b>	8.20 X 6.90	<b>7- Bedroom 1</b>	4.60 X 3.85
<b>2- Guest toilet</b>	2.28 X 2.22	<b>8- Bedroom 2</b>	4.27 X 3.97
<b>3- Terrace</b>	4.13 x1.30	<b>9- Terrace</b>	4.23 X 1.30
<b>4- Corridor</b>	5.19 X 1.36	<b>10- Bedroom 3</b>	4.22 X 3.97
<b>5- Kitchen</b>	4.04 X 3.23	<b>11- Dressing</b>	2.38 X 1.90
<b>6- Bathroom</b>	4.05 X 2.05	<b>12- Bathroom</b>	2.38 X 2.14
		<b>13- Terrace</b>	1.85 X 1.60

Total Area  
210M<sup>2</sup>



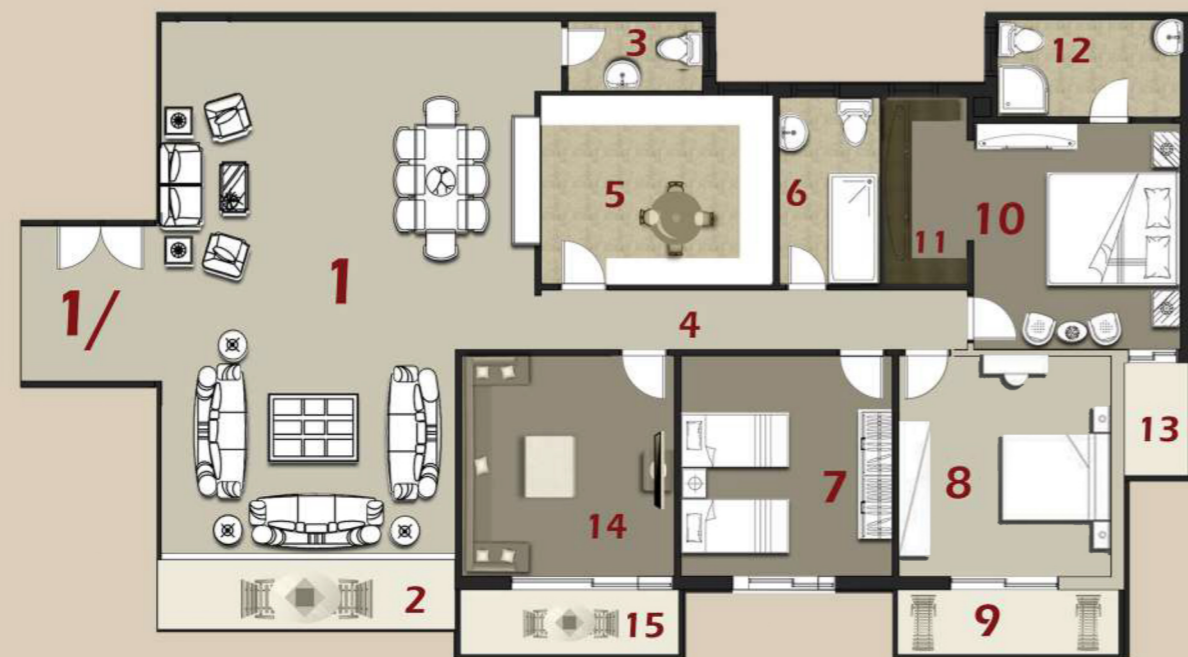
<b>1- Reception</b>	5.00 X 8.37	<b>8- Terrace</b>	1.50 X 1.99
<b>Reception</b>	1.42 X 1.46	<b>9- Bedroom1</b>	3.72 X 3.78
<b>2- Terrace</b>	1.38 X 4.23	<b>10- Bedroom2</b>	3.78 X 4.06
<b>3- kitchen</b>	3.29 X 3.32	<b>11- Terrace</b>	1.44 X 1.92
<b>4- Guest Bathroom</b>	1.48 X 1.98	<b>12- M.Bedroom</b>	4.23 X 4.31
<b>5- Bathroom</b>	2.15 X 2.72	<b>13- Bathroom</b>	2.15 X 3.10
<b>6- Corridor</b>	1.32 X 11.00	<b>14- Terrace</b>	1.28 X 4.23
<b>7- living room</b>	3.72 X 3.78		

Total Area  
266M<sup>2</sup>



<b>1- Reception</b>	10.12 x 7.07	<b>9- Terrace</b>	4.31 x 1.30
<b>2- Terrace</b>	5.59 x 1.35	<b>10- M.Bedroom</b>	4.10 x 4.32
<b>3- Guest Toilet</b>	2.87 x 1.41	<b>11- Dressing</b>	1.62 x 3.83
<b>4- Corridor</b>	8.05 x 1.10	<b>12- Bathroom</b>	3.90 x 1.89
<b>5- Kitchen</b>	3.70 x 4.43	<b>13- Terrace</b>	1.30 x 2.45
<b>6- Bathroom</b>	3.70 x 2.00	<b>14- Living room</b>	4.47 x 4.07
<b>7- Bedroom 1</b>	4.47 x 4.06	<b>15- Terrace</b>	4.25 x 1.30
<b>8- Bedroom 2</b>	4.77 x 4.31		

Total Area  
272M<sup>2</sup>



<b>1- Reception</b>	10.12x7.07	<b>8- Bedroom 2</b>	4.77 x 4.31
<b>1/- Lobby</b>	2.62 x3.13	<b>9- Terrace</b>	4.31 x 1.30
<b>2- Terrace</b>	5.59 x1.35	<b>10- M.Bedroom</b>	4.10 x 4.32
<b>3- Guest Toilet</b>	2.87 x1.41	<b>11- Dressing</b>	1.62 x 3.83
<b>4- Corridor</b>	8.05 x1.10	<b>12- Bathroom</b>	3.90 x 1.89
<b>5- Kitchen</b>	3.70 x4.43	<b>13- Terrace</b>	1.30 x 2.45
<b>6- Bathroom</b>	3.70 x 2.00	<b>14- Living Room</b>	4.47 x 4.07
<b>7- Bedroom 1</b>	4.47 x 4.06	<b>15- Terrace</b>	4.25 x 1.30

Total Area  
280M<sup>2</sup>



<b>1- Reception</b>	10.12 X 7.82	<b>9- Terrace</b>	4.20 X 1.30
<b>2- Terrace</b>	5.70 X 1.30	<b>10- M.Bedroom</b>	4.45 X 4.22
<b>3- Guest Toilet</b>	2.62 X 1.47	<b>11- Dressing</b>	3.83 X 2.07
<b>4- Corridor</b>	7.54 X 1.10	<b>12- Bathroom</b>	3.90 X 2.08
<b>5- Kitchen</b>	3.90 X 3.83	<b>13- Terrace</b>	2.45 X 1.60
<b>6- Bathroom</b>	3.83 X 2.15	<b>14- Bedroom 3</b>	4.47 X 4.33
<b>7- Bedroom 1</b>	4.47 X 4.22	<b>15- Terrace</b>	4.30 X 1.30
<b>8- Bedroom 2</b>	24.47 X 4.20	<b>16- Wash Area</b>	2.22 X 1.30

CONSTRUCTING THE FUTURE

# Our Partners



**ESO CONSULTANCY**  
ELECTROMECHANICAL STUDIES OFFICE  
مكتب الدراسات الكهروميكانيكية  
CONSULT. ENG. OMAR ABDELMONEIM



ON THE STRENGTH OF OUR PAST