

Suli GOLF
RESIDENCE



PLEASURES
R INFINITE

Suli

GOLF
RESIDENCE

PLEASURES R∞



Index

03

About Suli

04

About UC

05

Brand values

06

Location



07

Networking

10

Unite types

08

Facilities

11

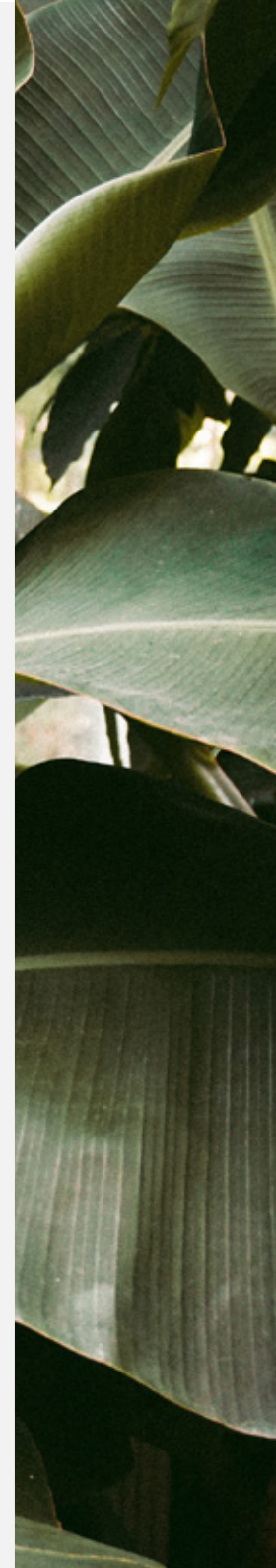
Partnership

09

Community

12

Contacts





About Suli

An exquisitely liveable gated community in the making, to create a prominent greenery neighborhood in the middle of the New Administrative Capital (NAC), with the first golf field and school. The compound is designed to execute all the insightful needs into easy-to-use facilities. Developing Instrumental-level vibes for newlyweds and families where pleasures are infinite.

The residential compound is located in the heart of the R8 with various range of unique apartments and duplexes encircled by signature greenery and sensational artificial lakes.





About UC

With twenty years of building heritage and impressive experience, UC developments were the first among Real Estate companies to start the innovative thinking movement, to combine fine architecture with high-quality construction and exceptional creations. However, the legacy continues with outstanding and distinctive projects like Suli Residence and East tower at the NAC. UC's vision is to create projects that not just impress people, but turn all their needs and dreams into a liveable space.

Hence, people come and go to different places until one's essence gets attached to a certain location, where a feeling of satisfaction occurs, where gratification and longing are everywhere, a place that resembles one's soul, and has a deep connection tailored for everyone. A real connection to a place, a place where people's silhouettes are the mono-color reflection of their own multicolored dreams.

Brand Values

Professionalism

Showing our dedication to providing high-standard units.

Investments

People should know the value they get upon receiving such units.

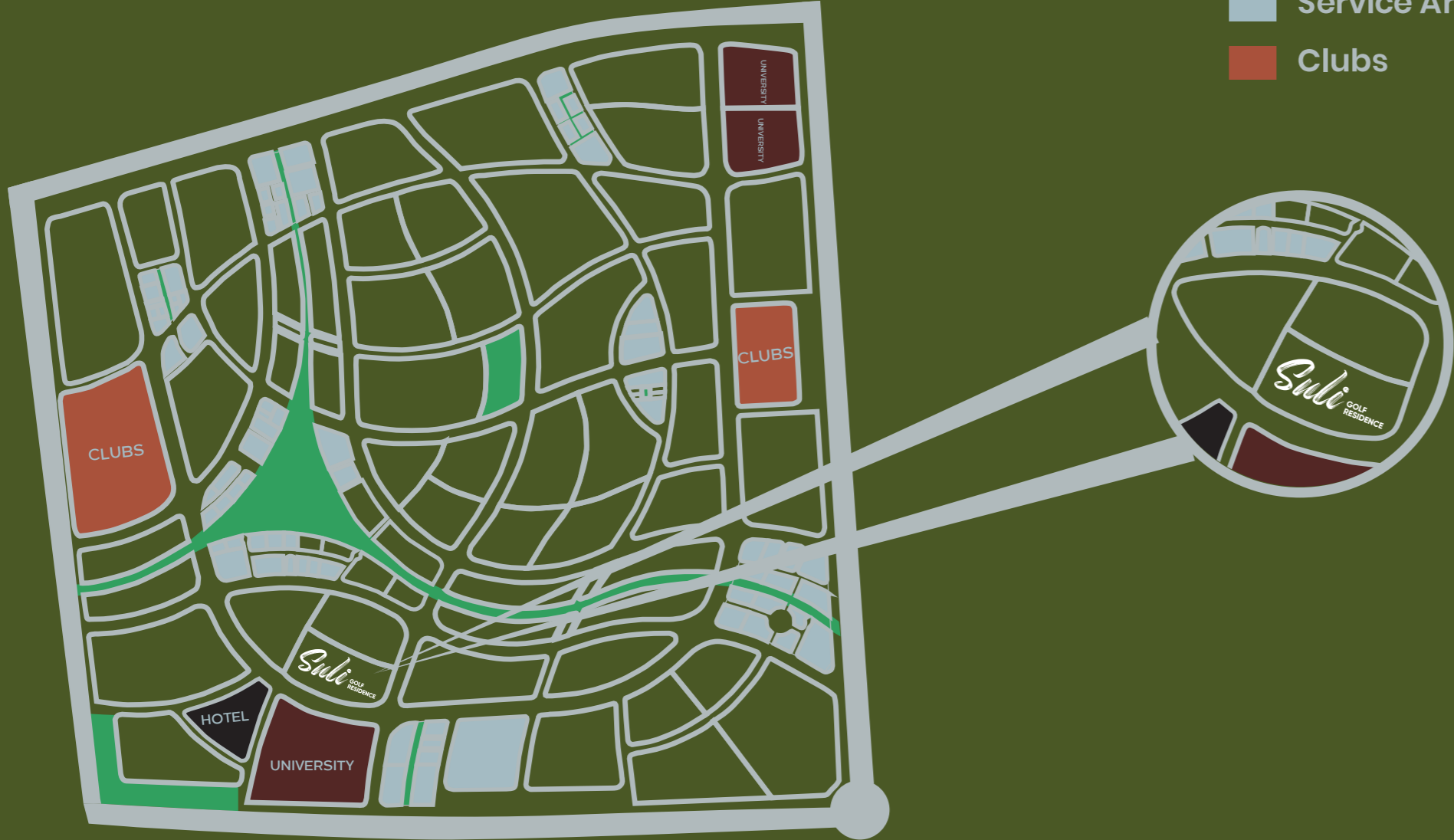
Integrity

Showing the brand's honesty, and trustworthiness in delivering the units.



Location

- Hotel
- Universities
- Green Areas
- Service Areas
- Clubs



R8 New Capital

Suli is placed in a strategic location in the R8. Near universities, hotels, social clubs, and service areas. Anything you need can be easily found steps away from home.

New Captial

Easy to reach from Ain Sokhna road, and easy to wander around the city with the New capital Monorail.



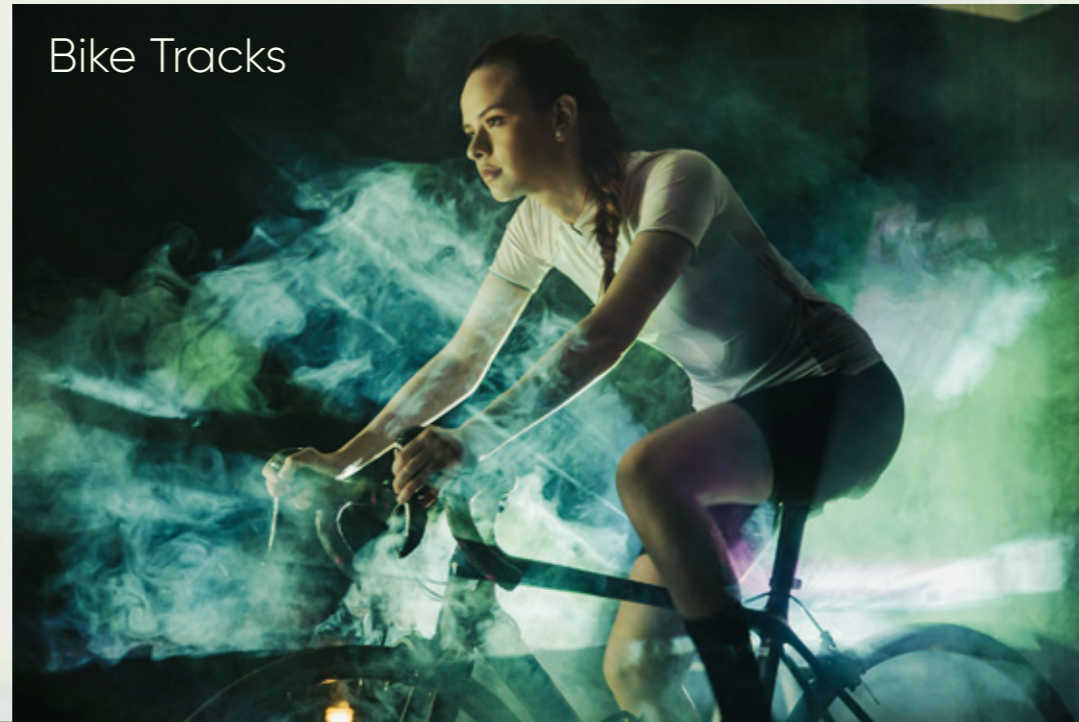
Life Inside Suli



Sports

An open community, that prospers during sports rounds in different areas. Where balls bounce back and forth on the tennis court, and the bike tracks parallelly have a genuine bicycle race, whereas the jogging trail has a matching vibe. Where the ball elevates at the basketball court and a smaller one finds its way to the right flag at the first golf school in the New Capital.

Meanwhile, the closed field of paddle tennis has a striking yet fair competition, besides the Crossfit zone. The water surface is satisfying for a quick swim at the swimming pool. Where the skaters can roam around the compound on the patinaje track. Meanwhile, the soccer team can be ready for a match round at the football field and the black ball initiates a fire contest on the squash court. A beautifully illustrated culture, that sustains sports and physical wellness.



The first
golf school
in the New
Capital





Greenery

One's eyes always look for leaves and the soothing green color that refreshes and revives the soul. The gated community is designed with landscape architecture to keep symmetry between buildings and green parks and to sustain the captivating spirit all around the residence.

The open space creates harmony for an artistic human theatre to entertain the whole residence, along with an open workspace to liberate productivity in the revived air. A barbecue area is designed to gather families and friends together over delicious food.

Open
Working
Spaces





Clubhouse

Where you can live memorable days, surrounded by music, while enjoying lip-smacking food and beverages.

Artificial Lakes

Designed for family picnics, overlooking an outstanding water view near home.

Malls & retail shops

Anything you need can be easily found steps away from home. Where shopping is a lifestyle.



Facilities



Fire Alarm



MATV System



Smart System



Data



Fire-Fighting



Solar Energy



Generator



Security



CCTV System



Thermal



Water-proofing



Transportation



Private parkings



Mosque



Club House



Indoor Pool



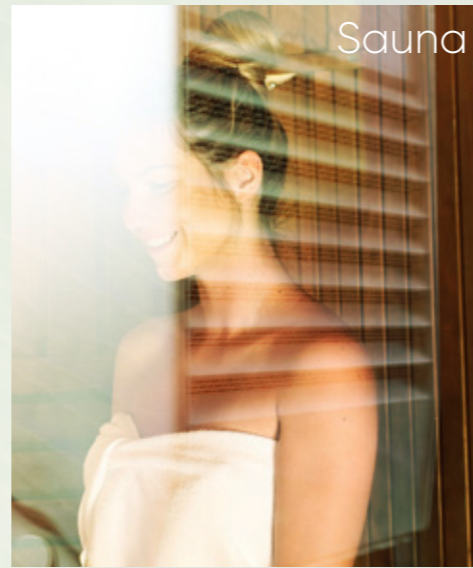
Jacuzzi



Spa



Massage



Sauna



Events Area



BBQ Area



Smart Gates



Smart Home - Mobile APP

Covered swimming pool

Kids Area



Outdoor Garden



Photo Session Area



Shuttle Bus



Swimming Pool



A woman with long dark hair is laughing heartily, her eyes closed and mouth wide open. She is wearing gold hoop earrings and a necklace. The background is a large, green, leafy cactus. The overall mood is joyful and vibrant.

Community, vibes and surroundings

Suli is defined as the eye-sparkling feeling when finding something special, selective, and niche, it is, by all means, the optimum of everything.

The amenities and surroundings of Suli are the chief reason behind its name, being characterized as, «Creme de la creme». The community is designed to be calm and soothing to one's soul, and where families can feel a sense of belonging..



Exteriors

White shade, wood, and greenery are the optimal definition of aesthetic and artistic. Symmetric modern buildings were built to allow fresh air and natural light to enter the units, with wide windows overlooking the green fields.







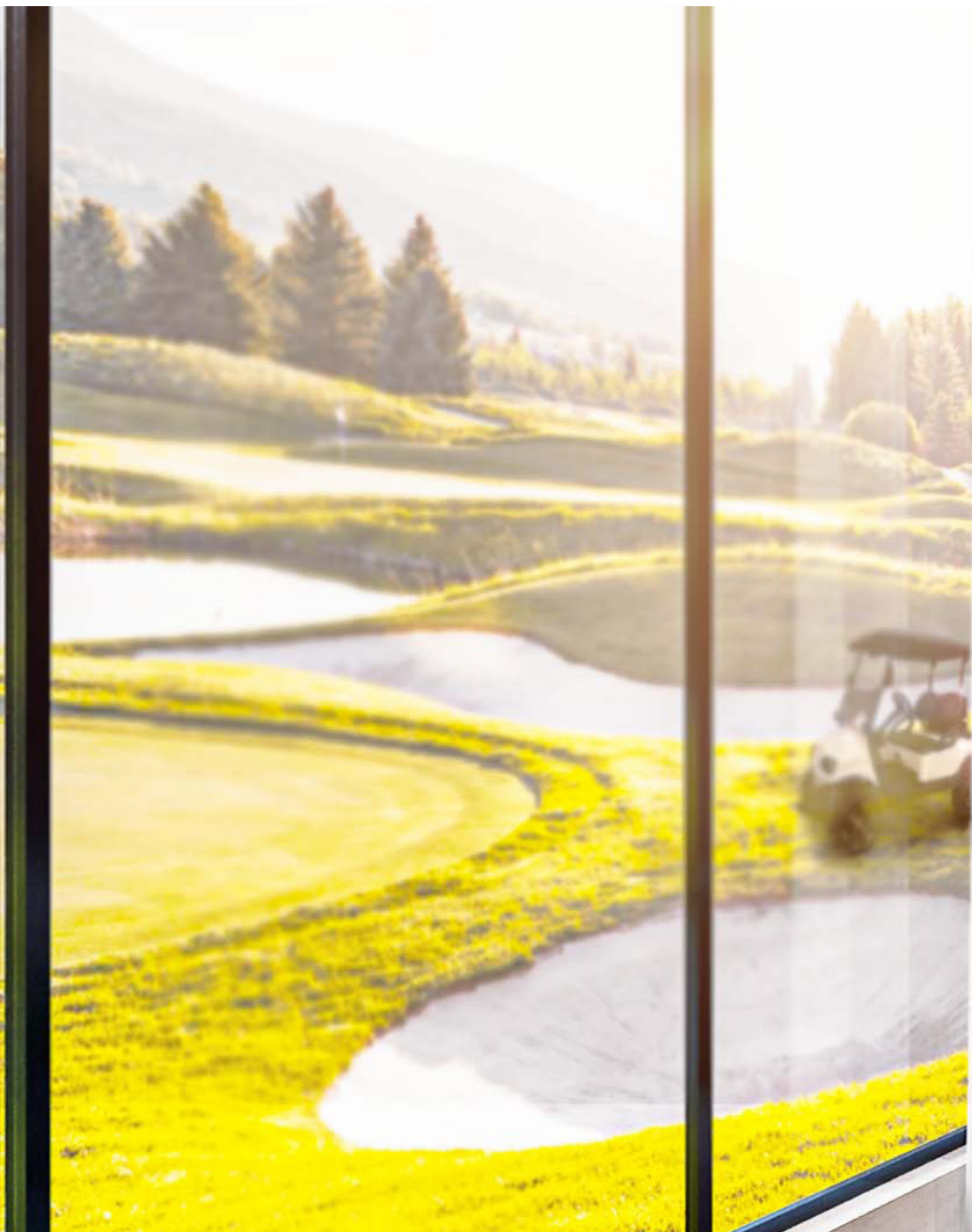


Interiors

Modernity with a touch of authenticity assembles a notable mark on Suli's interiors. Methodical colors bring soothing vibes to one's eyes and soul.





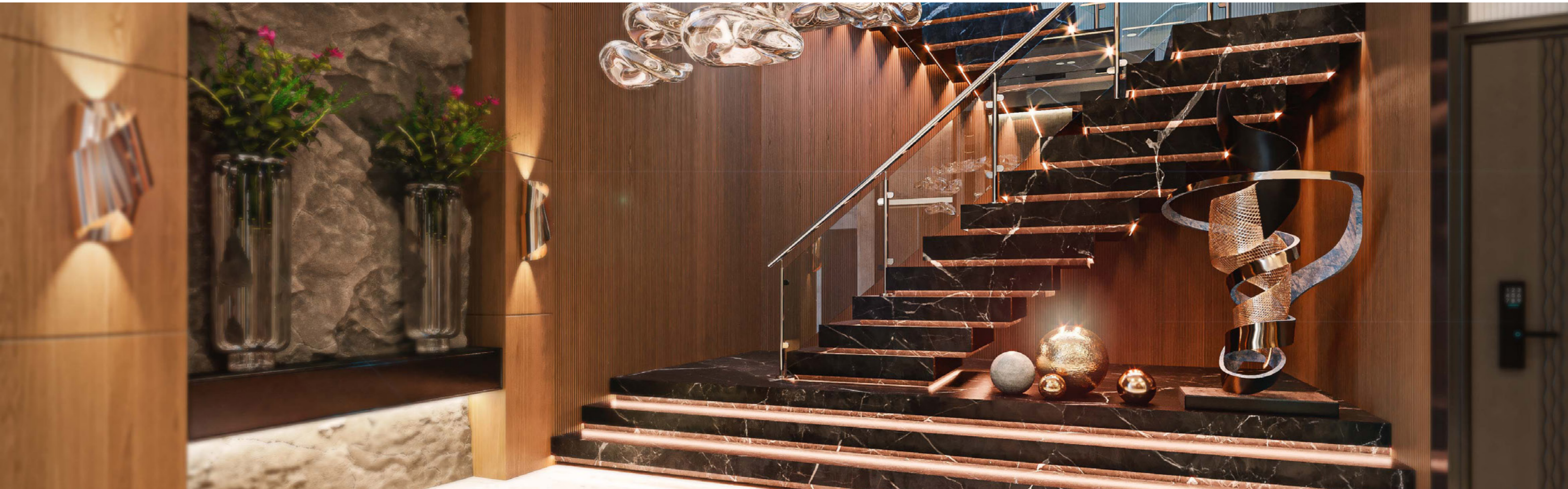






Duplex







Entrance



Underground
Parking



Services
Entrance



Secondary
Entrance



Main
Entrance



Developed by
 **UC.DEVELOPMENTS**